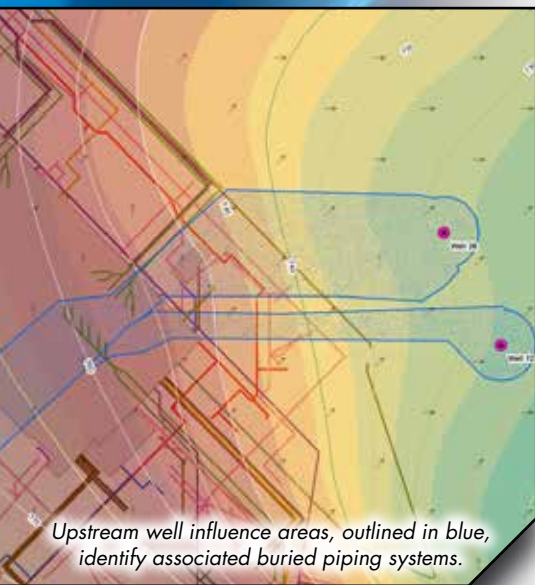
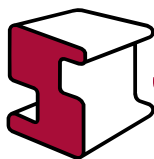


Locate wells relative to buried pipe



Upstream well influence areas, outlined in blue, identify associated buried piping systems.



Structural Integrity Associates, Inc.®

Experts in the prevention and control of structural and mechanical failures

Groundwater Protection

Structural Integrity recognizes the value of collaboration between the program owners charged with keeping the material in the pipe (Buried/Underground Pipe), and those charged with the early detection of releases (Groundwater Protection). We have created a new MAPPro® application that integrates the information used by both programs to improve the way you manage and visualize radionuclide monitoring relative to the information contained within the EPRI BPWorks™ database and display it all in a Geographic Information System

- Integrate groundwater sampling data with buried piping data to generate an SSC Risk Evaluation.
- View data in tabular format, graphical or on a map.
- Examine relationships via reports.
- Associate buried pipes with wells.

OUR STORY

Structural Integrity has taken the knowledge gained from buried piping at Nuclear sites and developed an integrated approach to examining Groundwater Protection.

MAPPRO® WELL MODULE

Well data is integrated via the module with the BPWorks™ database.

- Directly Import Well Measurement values for analysis
- Analyze well readings and trends
- Search and Chart data to identify issues
- Streamline the NEI 07-07 Reassessment Process

More about the MAPPro® Well Module

The key functionality of the module allows for a quick view of associated buried pipes to each well. The User can filter the pipes based on pipe content and view any data about the pipes.

Risk Assessments are easily created for both buried piping and non-buried piping systems. This makes re-assessment efficient.

Up to 32 different radionuclides are stored in the database and can be analyzed using either the Criteria or Trending reports.

MAPPROVIEW®

All the Groundwater Protection data can be viewed in MAPProView® which is a Geographic Information Systems view of BPWorks® pipe data

Both Groundwater Protection data and buried piping data are viewed in a single map. Rapidly identify piping containing licensed and reclaimed material new wells.

Upstream buried piping influence areas are generated using the Structural Integrity model "Monitoring Wells Influence Model." These areas and associated pipes are displayed in MAPProView®.

Quickly view layers

By turning on and off various GIS layers key data can be displayed. Clicking on displayed features returns attributes stored with that feature.

Photos and well readings are displayed using a hyperlink tool to display well photos or tritium well reading data in graphical format.

For more information, please contact

Call Toll Free
877-4SI-POWER
877-474-7693

Visit our website at:
www.structint.com

Email: **info@structint.com**