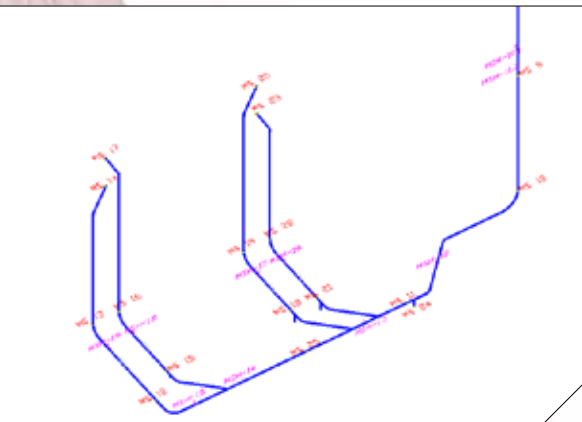
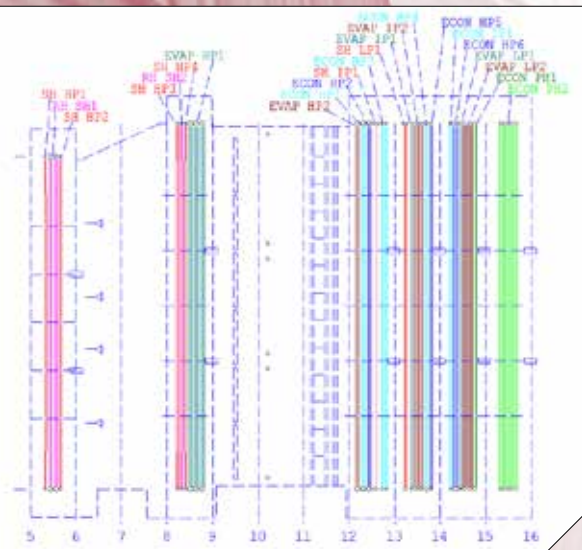


Sample HEP isometric image with weld locations.



Sample piping 3D CAD drawing.



Sample HRSG application.



STRUCTURAL INTEGRITY INTRODUCES PLANTTRACK[™]

AN INTEGRATED DATA MANAGEMENT SOLUTION FOR FOSSIL POWER PLANTS

Minimizing risk and maximizing reliability are the key goals for an effective asset management Program. Structural Integrity (SI) has developed the industry leading programs and methodologies to achieve these goals. An essential part of any program is a system that will warehouse the associated data; however, simply storing the data is not sufficient. The data management system must be capable of mining and analyzing the data to transform that data into information which can be used to make informed decisions. Through intuitive interaction with this information, knowledge is developed that helps you proactively manage your plant. Structural Integrity's data management program PlantTrack[™], will also help.

PlantTrack has a solid foundation building on the legacy TubeTrack application, which for 30 years has provided an industry best graphical interface for display and analysis of boiler tube information. We augmented this with technology from our own High Energy Piping data management system that was built by HEP engineers for HEP engineers. These two programs have been integrated into one web-based program, PlantTrack, currently with Boiler/HRSG Tubing and HEP/Piping modules. Future plans will expand capabilities to include other plant components and systems such as Headers, Turbine Generators, Feedwater Heaters, Condensers, and other Balance of Plant systems.

Benefits of PlantTrack:

- Easy access from different operating systems and platforms
- Flexible graphics options
- Ability to utilize standard and custom reports and charts
- Powerful database with advanced sorting, filtering, data mining capabilities
- Central location for plant data and asset management.

PlantTrack provides a modular, scalable platform that can support many power plant components

- Boilers: Tubing, headers, coal piping, and more
- HEP: Girth and seam welds, hangers, feedwater systems
- Across the plant
 - Balance of Plant systems
 - Turbines, generators, condensers to name a few

FLEXIBLE GRAPHICS OPTIONS:

The PlantTrack application may have:

- 3D CAD drawings
- 2D CAD isometric or orthogonal view drawings
- Scanned in isometric drawings

For more information, please contact:

Call Toll Free
877-4SI-POWER
877-474-7693

Visit our website at:
www.structint.com/plantrack

Email: **info@structint.com**

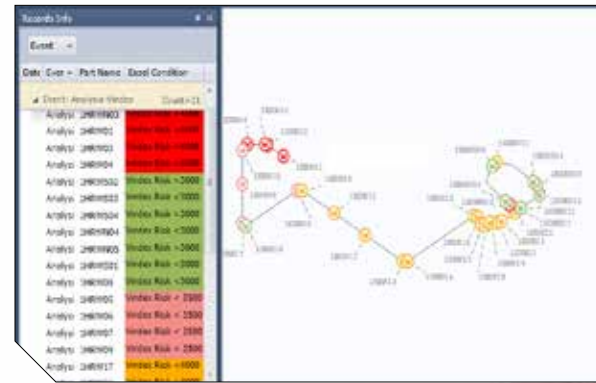
DATABASE TO GRAPHICS CONNECTIVITY

PlantTrack drawings/images are interactive, and selected records can be displayed on the graphics color-coded based on any record field. Examples for HEP/Piping applications:

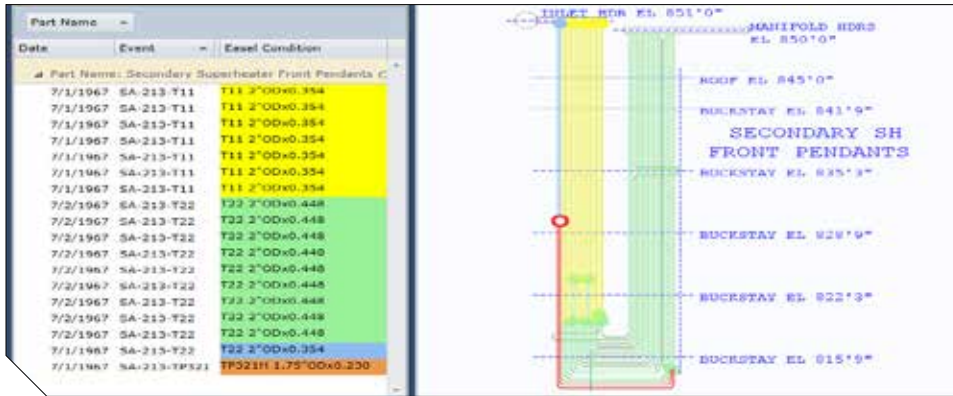
- Hanger inspection findings
- Weld inspection indications
- Stress calculation results
- Asbestos insulation locations
- Hardness measurements
- Scheduled inspection locations, etc.

For boiler/HRSG applications:

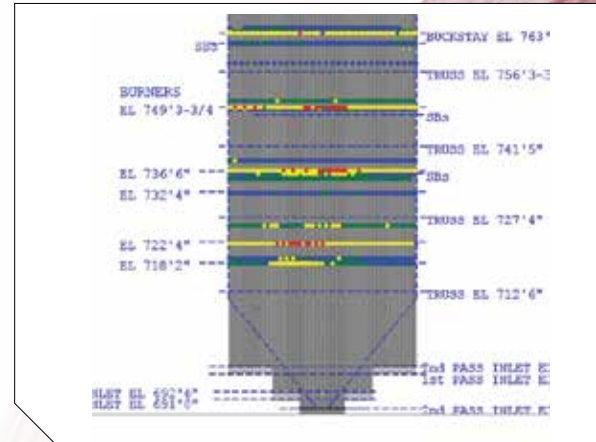
- Tube failures color-coded based on failure mechanism
- Tube repair methods
- Tube materials (material type, outside diameter, wall thickness)
- Wall/Oxide thickness readings, etc.



Sample piping drawing displaying SI's risk-ranking analysis (VINDEX) results.



Sample Superheater drawing with tube material data.

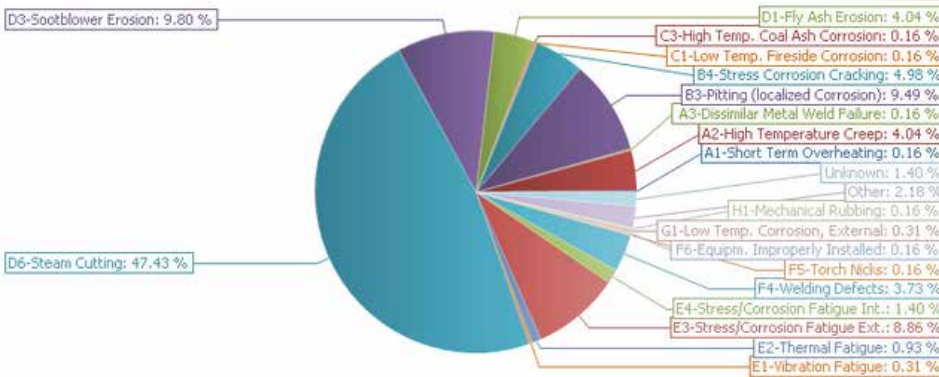


Sample waterwall drawing with NDE Wall Thickness Readings

REPORTING FEATURES

PlantTrack is based on SQL database with advanced sorting, filtering, and data mining capabilities. Quick List and Chart features allow users to quickly design filters and create lists and charts:

The users can also customize standard reports



Flexible Database Configuration Setup

Authorized users can edit and add new record types, as well as fields associated with records.

EXPANDED RESOURCES AND LONG-TERM SUPPORT

- Backing of a 30 year company with more than 260 employees
- Commitment to keep PlantTrack current, up-to-date with new web-technology, expand to provide state-of-the-art features
- Helpline, web-based forums, FAQs, User community
- Easy access to add-on modules and services
- Engineering Modules: Vindex, PGTLA, Header
- Services: Inspection and testing (with information upload)

For more information, please contact:

Call Toll Free
877-4SI-POWER
877-474-7693

Visit our website at:
www.structint.com/plantrack
 Email: info@structint.com