

ANATECH CORP.

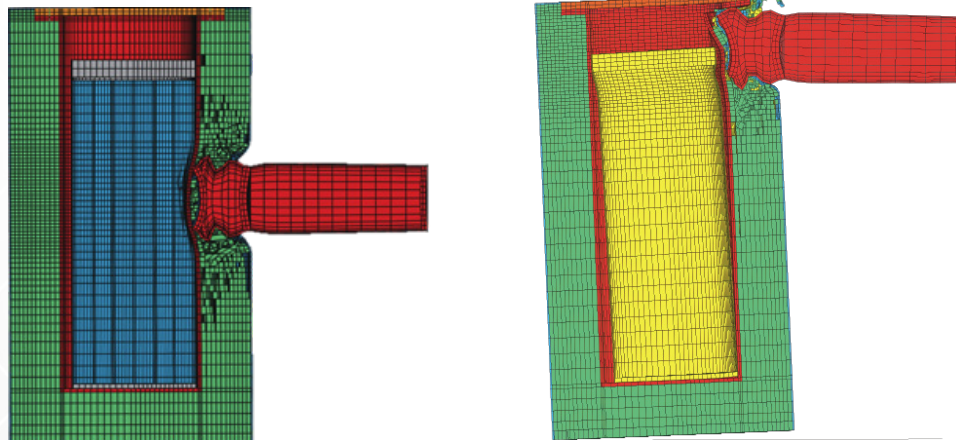


A  **Structural Integrity Associates, Inc.**® COMPANY

Extreme Loading Events and Tornado Generated Missiles

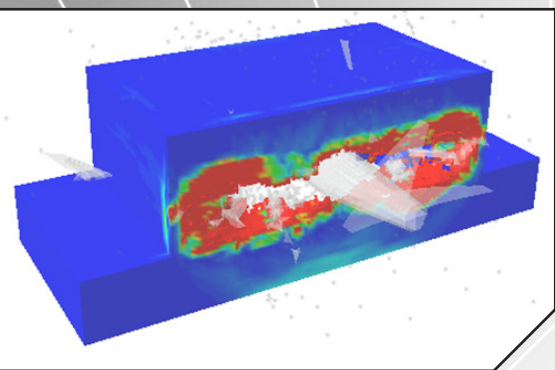
ANATECH provides experienced structural engineering services to evaluate extreme loading events on critical targets. A structure's response to missile impact, aircraft crash, or bomb blasts requires that the target and the impacting objects become parts of the damage computations. Such complex computation is well beyond normal design based engineering practice. Our experts use state of the art tools and techniques to provide analysis and solutions to protect safety-related structures and components exposed to extreme loading events.

- Utilizes methodology recognized in NEI 07-13 and accepted by USNRC for performing aircraft impact assessments for new plant design.
- Experience in applications for aircraft/missile impact, heavy load handling accidents, and impulsive blast loads.
- Experimentally validated explicit dynamics finite element analysis code developed at SI-ANATECH

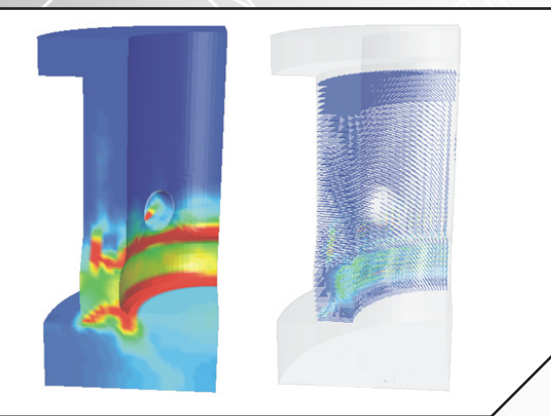
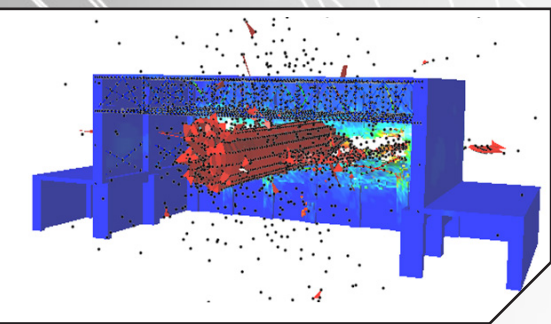


Local Deformable hard Missile Response

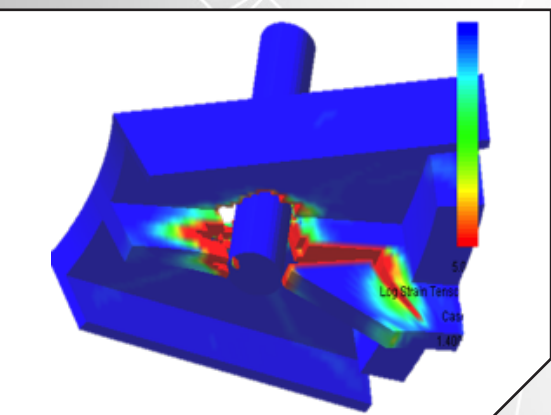
- Analysis methodology can assess not only viability of target but also surrounding support structures and systems.
- Provides refined solution when traditional strain energy balance methods calculate unrealistic or overly conservative results.
- Non-linear concrete and steel material response as opposed to traditional linear elastic strain energy balance methods.
- Capable of simulating energy dissipation of a deformable missile as opposed to highly conservative rigid missile methodology.



Aircraft Impact Assessment



Impulsive Blast Loads



Handling Accidents for Heavy Loads

For more information:

Visit our website at:

www.ANATECH.com

Call Toll Free (US Only)

877-474-7693

877-4SI-POWER